



Cultural Site Sheet

Cultural site name	Palazzo della Fraternità Museum
Type of site	Museum
Address	Piazza Grande
City	Arezzo
Contacts	+39 0575 24694 +39 0575 26849 Fax +39 0575 354366 Email. info@museodifraternita.it info@fraternitadeilaici.it
Website	http://www.museodifraternita.it/it/index.php https://www.fraternitadeilaici.it/
WCAG 2.1 compliant accessible website	NO

TESTED BY: [Handy Superabile Social Promotion Association](#) in summer 2024

Please note The following information refers to the date of verification shown at the bottom of each sheet. **The Association** is not responsible for any significant changes made by the property after the visit.

Summary

Cultural Site Sheet.....	1
Description.....	2
Arrival at the property.....	3
Private/public parking.....	3
Pathway from the car park to the entrance.....	4
Reception.....	5
Itineraries.....	6
Services.....	13
Additional elements.....	13
Toilets for guests with reduced mobility.....	14
Medical practices/healthcare facilities.....	15

Project carried out with the contribution of the





Description

The fraternity museum was refounded and opened in 2010. The Palace houses the Museum which until 1935 preserved the ancient collections of the institution, deriving from donations, testamentary bequests and public commissions from the fourteenth to the nineteenth century, which were partly destined to form the nuclei of the library and civic museums that later became state-owned. A large part of the works including paintings, sculptures, drawings, prints and antique furnishings still remains in the Palace today and constitutes the fulcrum of the exhibition itinerary. The façade of the Palazzo di Fraternita, a harmonious synthesis of Gothic and Renaissance style, saw the great protagonists of art at work, including Spinello Aretino who, with the fresco of *Christ in Pietà* above the stone portal, tells the story of Arezzo art in the Middle Ages. Witness to the fifteenth-century sculpture is the stone group of the *Madonna della Misericordia and Saints* by Bernardo Rossellino, while the sixteenth century is marked by the chimes of the famous moon phase clock, the work of Felice da Fossato, housed inside the bell sail designed by Vasari.

General information




Opening and closing period	Always open
Times	From 10.30 a.m. to 6.00 p.m.
Ticket cost	5 Euro
Reductions	Cumulative admission for groups (over 20 people) Euro 3 per person. Euro 2 guided tour integration Children under 14 and people with disabilities free admission
Online purchase	No, but you can book the visit online at the following link http://www.museodifraternita.it/it/prenota
Pet access	Not detected





Arrival at the property



Private/public parking

Presence of private parking	NO
Public parking nearby	YES
Type of flooring in the public car park	Asphalt and stone blocks
Presence of parking space reserved for people with disabilities	SI num.3
	
	<p>Eventual notes: There is a parking lot with three parking spaces reserved for people with reduced mobility, near the Duomo, about 250 meters from the Palace. However, it is advisable to apply for a permit for circulation and parking nearby, as the route is challenging. The request can be sent to the following link https://www.comune.arezzo.it/contrassegn o-invalidi-europeo or to the toll-free number 800- 211155</p>





Pathway from the car park to the entrance

The property can be reached from the car park	flat
Distance from parking to entrance	10/300 meters
There are indicators and tactile maps	NO
There is an accessible entrance	YES secondary entrance
How to access the site	<input checked="" type="checkbox"/> via ramp coming from Piazza Grande, the first ramp has a length of 122 cm, width 80 cm, slope 19%, handrail on the right interrupted by a parking shelf, the second coming from via Vasari has a length of 122 cm, width 80 cm, slope 18% handrail on the left interrupted by a parking shelf
Useful width of door/entrance gate	Above 90 cm
Type of door	with 2 doors that can be opened inwards
Type of handle	Ring
	

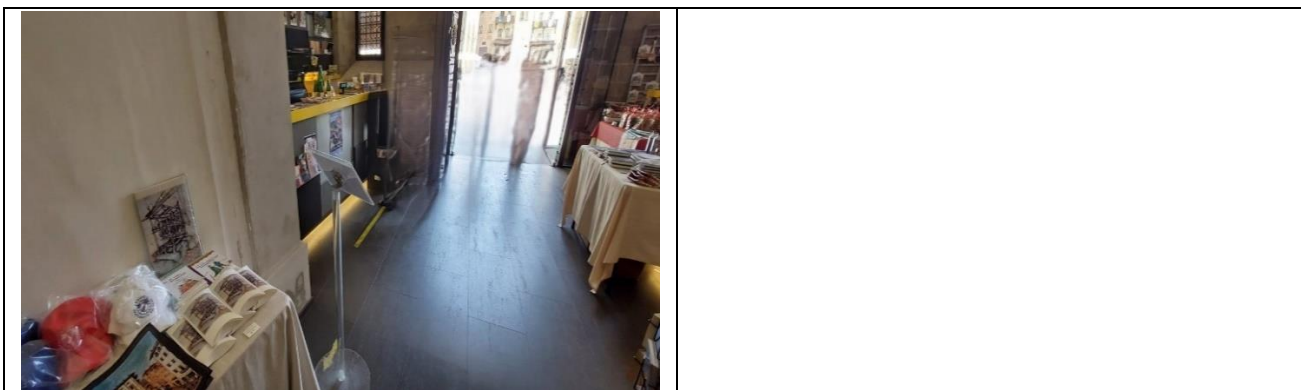




Reception

How to access	flat
Priority access for visitors with disabilities	YES
Bench height	Above 100
Orientation signs	<input checked="" type="checkbox"/> directional signs placed at 140/170 cm with contrasting colors
Type of information material	<input type="checkbox"/> Braille guides <input type="checkbox"/> guides in large print <input type="checkbox"/> Facilitated Language Guides (AAC) <input type="checkbox"/> Audio guides <input type="checkbox"/> video guides in LIS or subtitles <input type="checkbox"/> tactile maps <input type="checkbox"/> QR code <input type="checkbox"/> imapp
A cloakroom accessible to visitors with motor disabilities is available	NO
Multilingual staff	YES
The staff followed a training course on welcoming people with different disabilities	NO
Presence of sign language interpreters	NO
Reception desk height	Choose an item.
The following aids are available for visitors with disabilities	<input type="checkbox"/> manual wheelchair <input type="checkbox"/> Crutches <input type="checkbox"/> Magnifier <input type="checkbox"/> Tablet with pre-installed app





Itineraries

Presence of maps	YES
Touch indicators and visual-touch maps	NO
Presence of didactic panels	YES
Audio guide	NO
Touch Models	NO
Multimedia workstations accessible from a seated position	NO
Routes dedicated to children	YES
Stopping points	YES
Route spread over several floors	YES no. 2 floors
Access to the starting point of the route	with ramp 133 cm long, over 200 cm wide, slope 10%, no handrail.





<p>How to access the rooms</p>	<p><input checked="" type="checkbox"/> by elevator door width 78 cm, cabin width 95 cm, cabin depth 124 cm, call button height 114 cm, highest keypad button height 140, embossed/braille keys</p>
<p>Usable width of door/entrance gate/corridor</p>	<p>Above 90 cm</p>
<p>Room Identification</p>	<p>by means of a sign placed 140 cm from the ground with gold color on a black background. Some signs are placed above the entrance doors.</p>
<p>Bulletin board/information panels and captions</p>	<p><input checked="" type="checkbox"/> Well-contrasted font, better black on a white/cream background</p> <p><input type="checkbox"/> Panels also written in English</p>





<p>Museum itinerary: Ground floor</p>	<p>The ground floor is accessible to guests with disabilities and has 2 small rooms</p>
<p>Floor 1</p>	<p>On floor 1 there is the educational center of the House of Music of Arezzo, a unique reality in Italy, created to develop synergies and collaborations between subjects involved in the dissemination of music. Inside there are activities aimed at users of all ages: from research to experimentation, from teaching to concert production up to musical dissemination for children. Accessible route</p>



Project promoted by



Regione Toscana



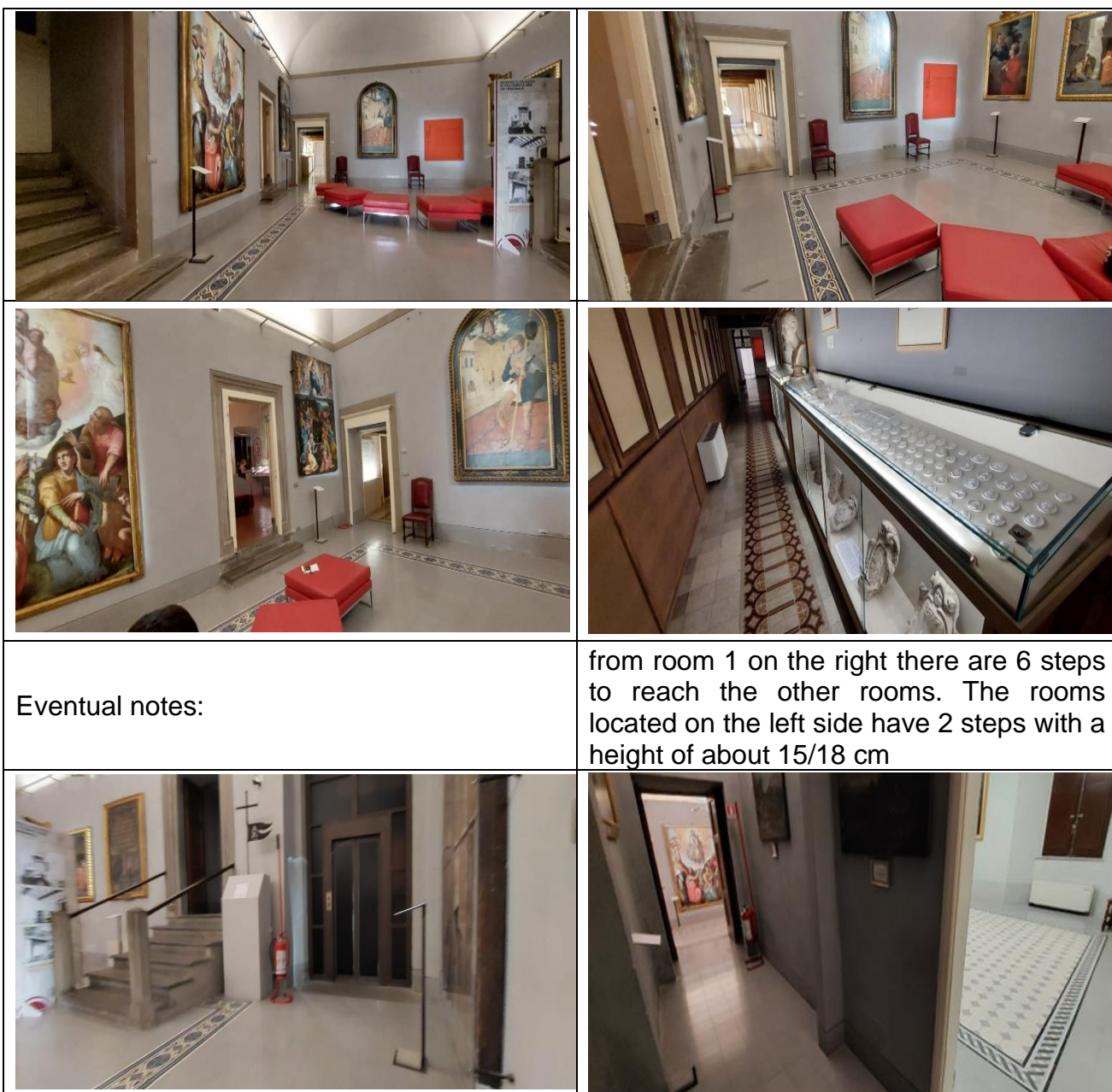
Floor 1 Exposure

Only the 1 hall and the corridor accessible by elevator are accessible. The other rooms have steps.

Project carried out with the contribution of the



Presidenza del
Consiglio dei Ministri
Ministro per la disabilità



Eventual notes:

from room 1 on the right there are 6 steps to reach the other rooms. The rooms located on the left side have 2 steps with a height of about 15/18 cm





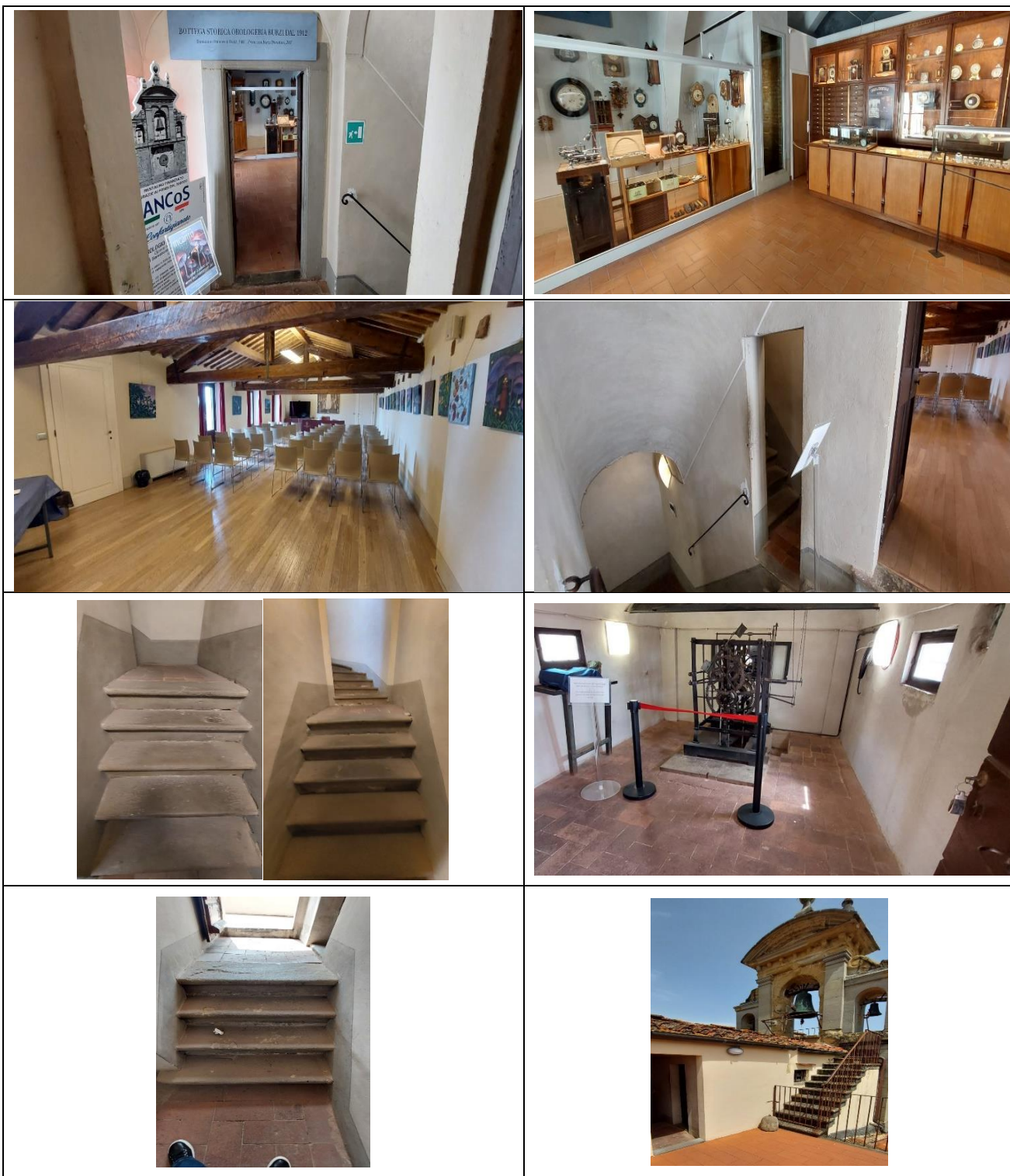
<p>Floor 2</p>	<p>Accessible historic shop, and conference room reachable by lift. The astronomical clock and the panoramic terrace are not accessible for guests with motor disabilities due to the presence of narrow passages and numerous steps</p>



Project promoted by



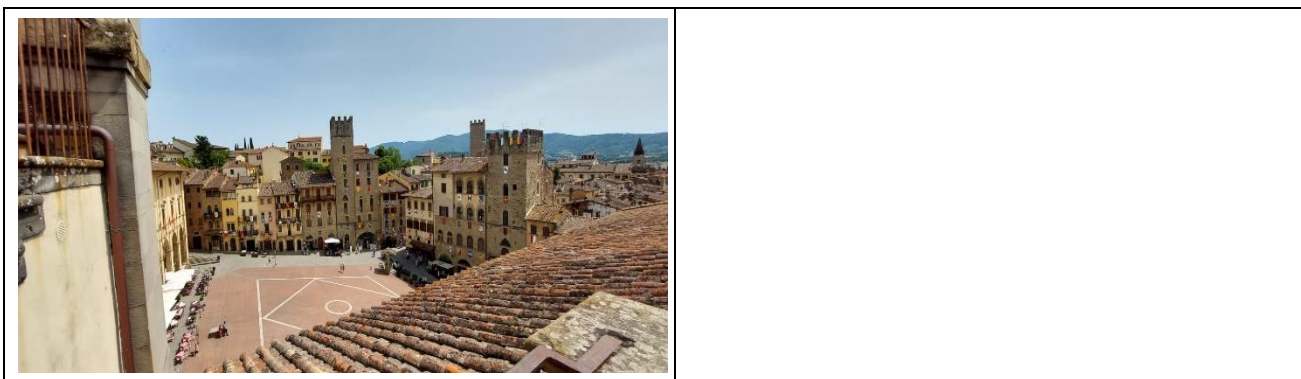
Regione Toscana



Project carried out with the contribution of the



Presidenza del
Consiglio dei Ministri
Ministro per la disabilità



Services

Additional elements

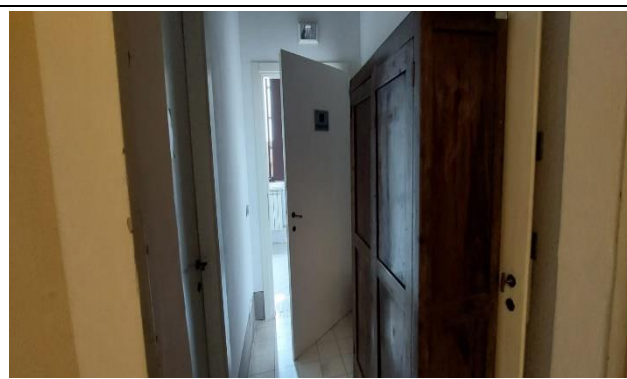
Guided tours for groups	YES
Guided tours for individuals	YES.
Activities for children and families	
Guided tours with trained staff	<input checked="" type="checkbox"/> for visitors with reduced mobility
Accessible bookshop	<input checked="" type="checkbox"/> flat





Toilets for guests with reduced mobility

Number of accessible toilets for guests with reduced mobility	1
Location	First floor
How to access the premises	<input checked="" type="checkbox"/> flat
Usable width of the entrance door	90 cm
Toilet height	50 cm
Toilet seat with open front tooth	Choose an item.
Support handles	Choose an item.
Flexible shower on the side of the toilet	Choose an item.
Free space on the sides of the toilet	left 19 cm right Above 90 cm frontal Above 90 cm
Electric doorbell/telephone	Choose an item.
Washbasin with space underneath for wheelchair approach	61 cm
Height from the ground lower edge mirror	120 cm
Baby changing table	Choose an item.





Medical practices/healthcare facilities

Hospitals near the property	San Donato Hospital, Via P.Nenni 20 Phone +39 0575 2551 Emergency Room, via P. Nenni 22 Phone +39 0575 2551
Other healthcare facilities	Dialysis on holiday, at San Donato Hospital, Arezzo – Pernici Maria Grazia, nursing coordinator Hemodialysis Arezzo, Phone +39 0575 255516 Email: mariagrazia.pernici@uslsudest.toscan.it

TESTED BY: [Handy Superabile Social Promotion Association](#) in 2024

